

Photographs

These Photos are representative of issues presented with the report. All pictures are provided in electronic format with audio descriptions on disks. All descriptions are repeated in writing in the accompanying report.



Photo 1 – Front view of subject property.

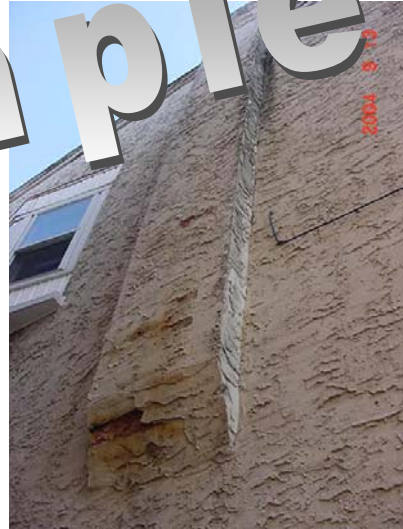


Photo 4 – Chimney parging is delaminating due to trapped and freezing rain.



Photo 2 – Railing is loose and improper.



Photo 3 – Fascia trim is short allowing birds to nest.



Photo 5 – Rear left corner is damaged allowing water to intrude exterior.



Photo 6 – Over grown vegetation and rubbish indicates prolonged neglect.



Photo 9 – Loose bricks need pointing, close vent stacks are difficult to keep sealed. Recommend replacing chimney flue and add a rain cap.



Photo 7 – Hot mopped roof is cracking and the roof drain is easily blocked by leaves and balls thrown onto the roof.



Photo 10 – Open wiring is dangerous and a code violation. All splices must be in a junction box.



Photo 8 – Flashing and seams are high maintenance.



Photo 11 – Buckets and pails are often signs of leaking plumbing.



Photo 12 – Loose exhaust stacks are a carbon monoxide risk. Multiple stacks in this arrangement are out of code compliance.



Photo 14 – Cellulose insulation is minimal and chocks off ventilation where adequate. Recommend adding R-19 fiberglass batts with rafter vents to assure proper ventilation through soffit.



Photo 13 – Peeling paint indicates possible leaks.